

Education Issues in Osteopathy Worldwide

Stephen Tyreman

Professor of Osteopathy & Philosophy
British School of Osteopathy and University of Bedfordshire

Tyler Cymet

Associate VP for Medical Education, Chief of Clinical Education
American Association of Colleges of Osteopathic Medicine

The World and The USA



Technical Requirements



To facilitate the attainment of optimum care and safety, students at the college of osteopathic medicine must:

1. Behave in a manner exhibiting high moral and behavioral standards reflecting the position and status of an osteopathic physician.
2. Demonstrate respect for individuals and groups with consideration to the diversity of age, gender, nationality, race, religion, or disability.
3. Students of osteopathic medicine must meet minimal technical and ability standards. The practice of medicine in general and osteopathic medicine in particular, requires the ability to learn, process, and utilize a great deal of knowledge and experience. Students must have the ability to see, hear, and touch independently to optimally assess the physical, mental, and emotional status of patients. Where a deficiency occurs, it must be compensated with the aid of prosthetics to the extent that the student's functioning is equal to that of a non-impaired student. Reasonable adaptations are those that will enable the osteopathic student to function independently and when necessary in a team-like fashion with other health professionals in an unimpaired manner.

Observation & Visual Integration

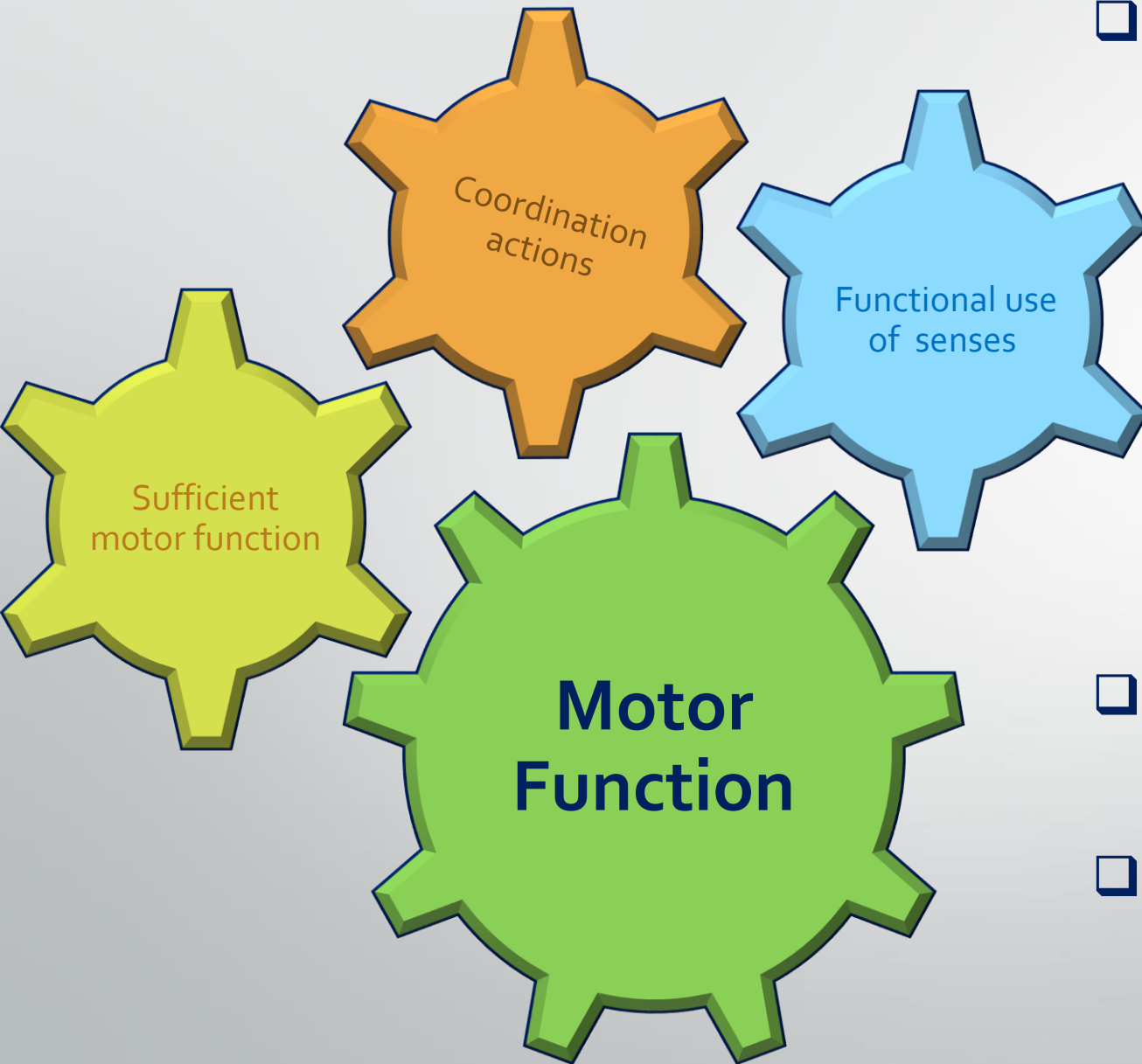


- ☐ sufficient visual capabilities to assess asymmetry, range of motion, and tissue color and texture changes
- ☐ observe at varying distances objects in low light at 0.3cm to discern non-verbal communication

Communication



- ☐ Speak, hear and observe patients communicate effectively in English
- ☐ Reading and writing
- ☐ Communicate effectively and efficiently in oral and written form with all health care members team in English.



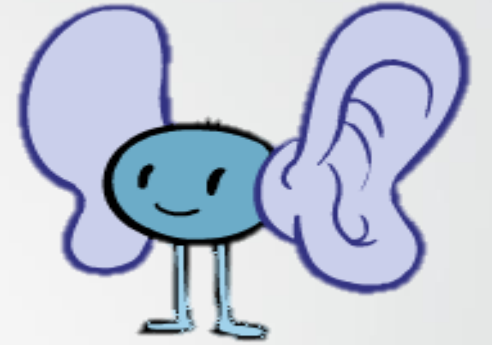
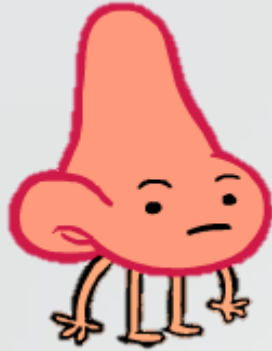
- ❑ Sufficient motor function to execute movements required to provide general care and emergency treatment

Examples:

cardiopulmonary resuscitation (CPR)
administration of intravenous medication
application of pressure to halt bleeding
opening of obstructed airways
suturing of simple wounds
performance of obstetrical maneuvers
osteopathic manipulative medicine.

- ❑ Coordination actions requiring gross and fine muscular movements, equilibrium
- ❑ Functional use of the senses of touch and vision

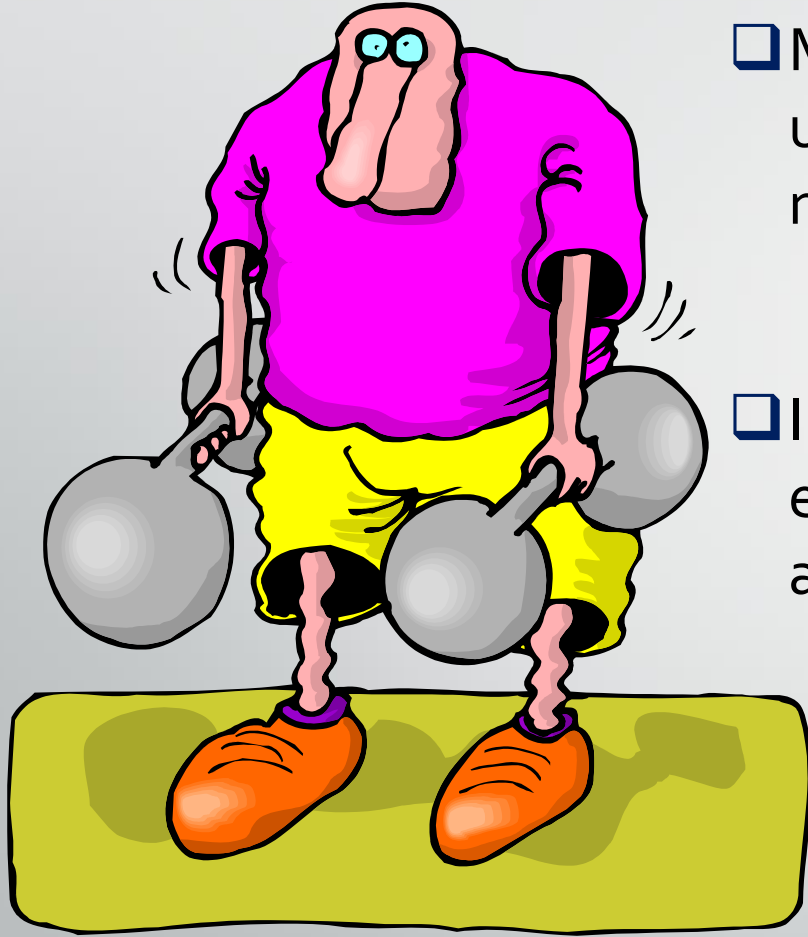
Sensory Skills



- ☐ Possess an enhanced ability to use sensory skills
- ☐ Individuals with disabilities may be require an evaluation to determine qualification, with or without reasonable accommodation
- ☐ Disabled individuals may include individuals with significant previous burns, sensory motor deficits, cicatrix formation and growth malformations



Strength and Mobility



- ❑ Medical treatments require upright posture with sufficient upper & lower extremity and overall body strength and mobility.
- ❑ Individuals with disabilities limitations may require evaluation to qualifications, with or without reasonable accommodation.

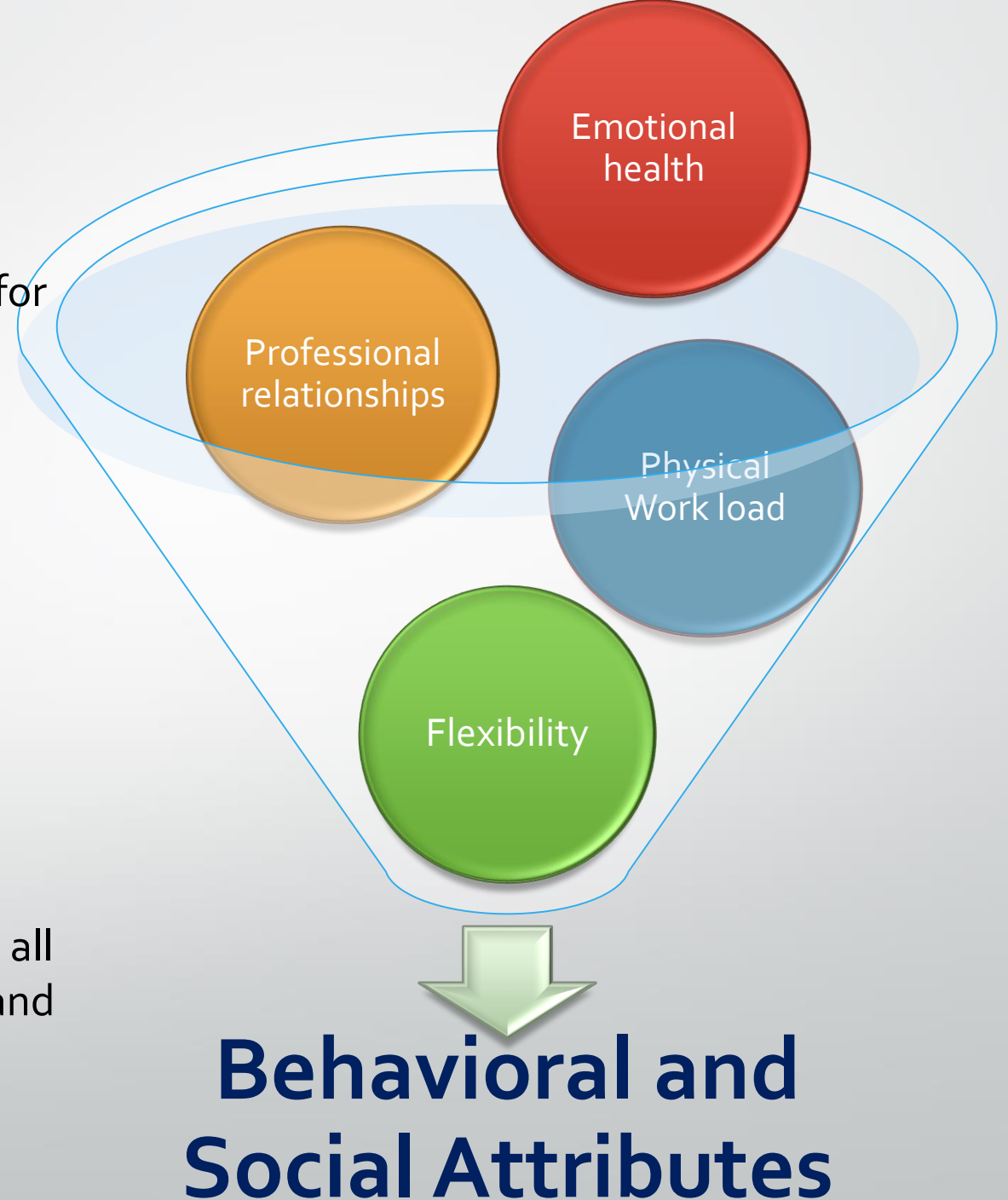


Intellectual, Conceptual, Integrative and Quantitative Abilities



- ☐ Concentrate, analyze and interpret data, and make decisions.
- ☐ Accurately write prescriptions, perform basic mathematical functions, quickly read charts
- ☐ Perform functions under a time limitation, under a reasonable amount of stress, in diverse clinical settings
- ☐ Comprehend three-dimensional relationships, spatial relationships of structures

- ❑ Emotional health to exercise good judgment, utilization of intellectual abilities and promptly complete all responsibilities to diagnosis and care for patients
- ❑ Development of mature, sensitive effective professional relationships with patients
- ❑ Tolerate physically exhausting workloads
- ❑ Display flexibility to adapt and function in uncertainties inherent in the clinical problems in changing environments
- ❑ Motivation, compassion, integrity, and concern are all personal qualities assessed during the admissions and educational processes



Teaching Ratio

Sources:

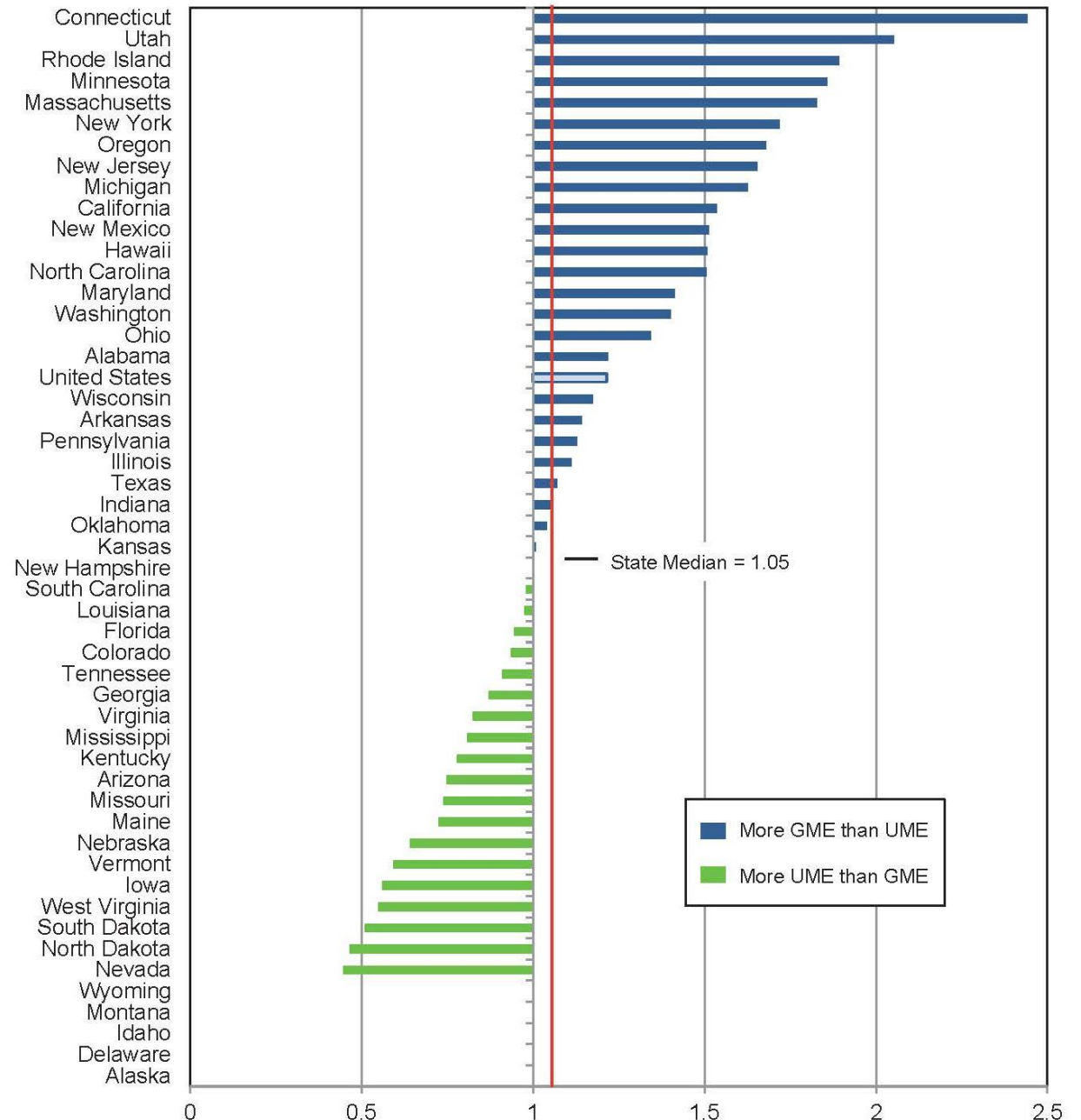
Medical enrollment data are from the AAMC Data Warehouse accessed online 8/13/13 at <https://www.aamc.org/data/facts>

Osteopathic enrollment data are from the AACOM website <http://www.aacom.org/data/studentenrollment/Pages/default.aspx> (accessed 8/14/13).

Residents on duty in ACGME programs are from the 2011 AAMC/AMA National GME Census.

Residents on duty in OGME programs are from JAOA 2013: 113(4):304.

Figure 15. Ratio of Residents and Fellows (GME) to Medical and Osteopathic Students (UME), Academic Year 2011-2012



Faculty Recruiting and Retention Problem