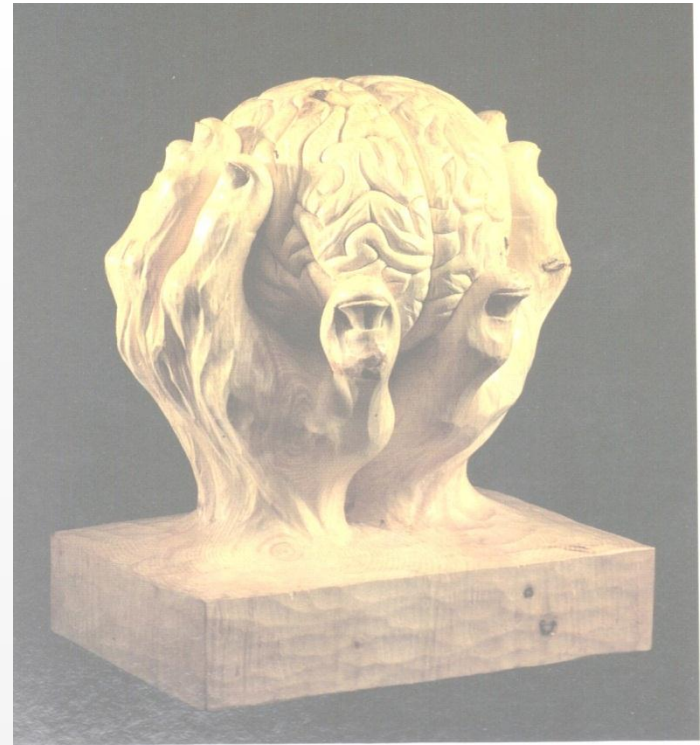




MIND MATTERS

A Palpation Research Project

Does it matter? Do we mind?



Mag. Friederike Kaiser MSc. DO.

friekaiser@osteopathie-jetzt.de

MIND MATTERS – A PALPATION RESEARCH PROJECT

Presumptions:

- We are experienced osteopaths.
- We work with „thinking fingers“ (Sutherland).
- We use to „look“ with our hands.
- We handle with our body, our mind and our spirit the body, the mind and the spirit of our patients.



PALPATION

PERCEPTION

= Information about the inner and the outer world

- Extercoception (Examiner)
 - Skinsenses
 - Proprioception
 - Spec. Somatosensibility auditive/visuell
- Interoception (Patients):
 - Proprioception
 - Visceroception
 - Noziception



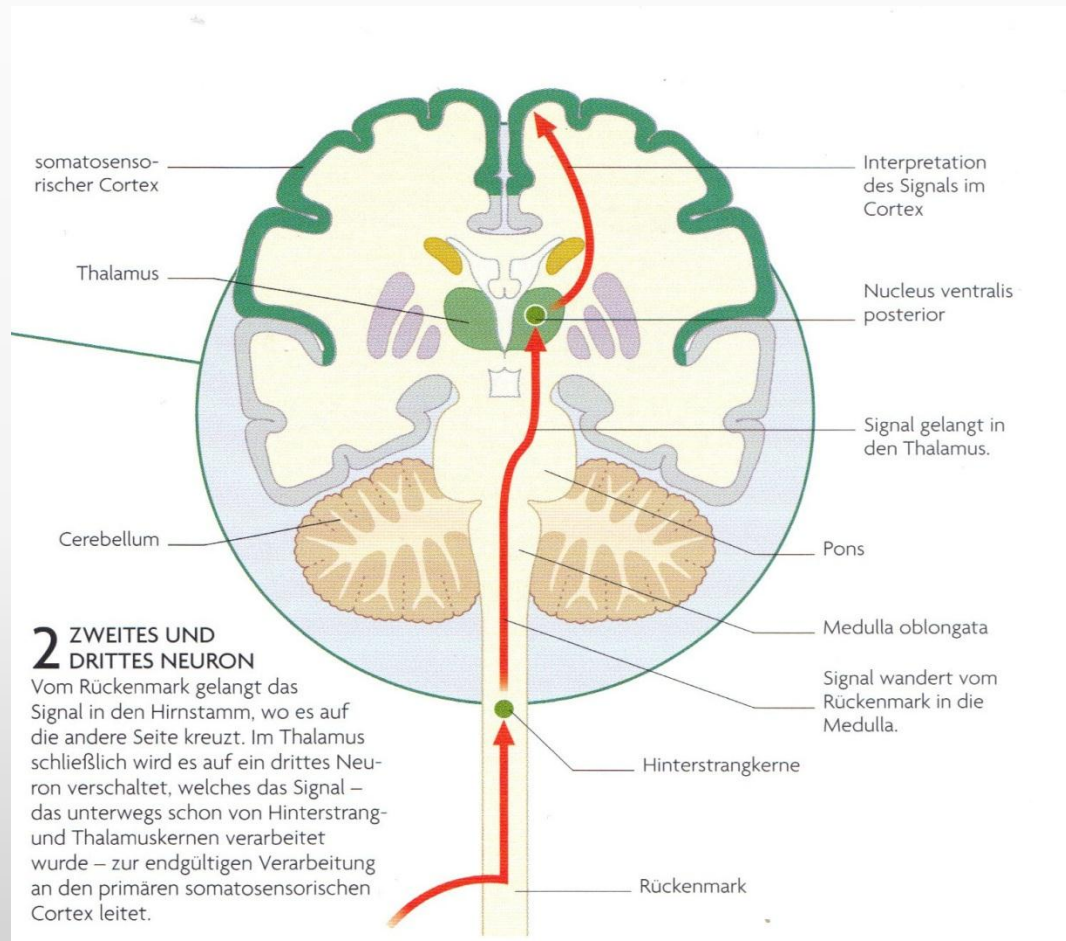
PALPATION = PERCEPTION?

What influences our Perception ?

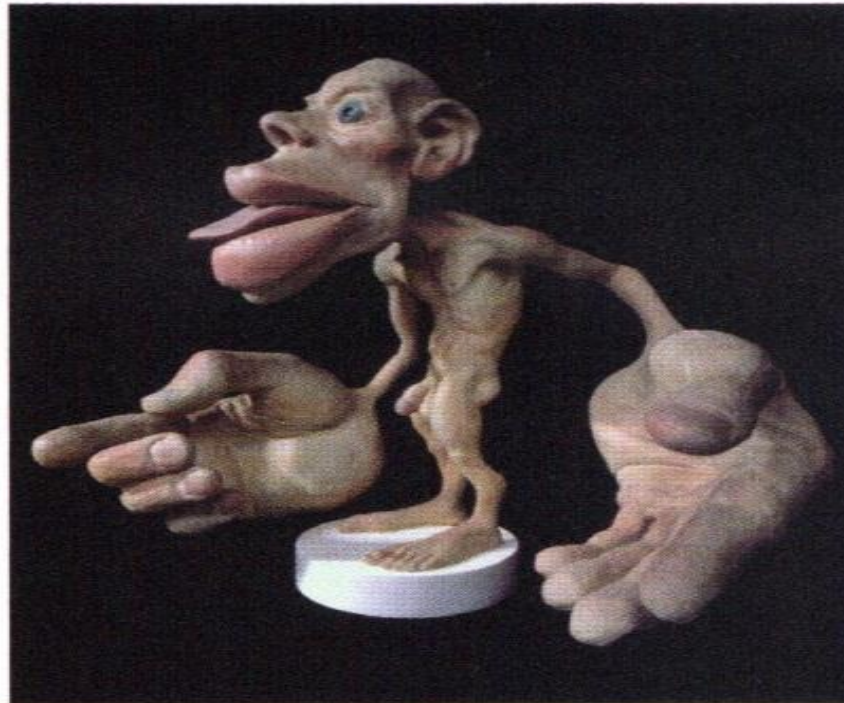
- Focus?
- Bottom-up Process (10%) neuronal input
- Top-down Process (90%)
 - Selection (prejustice)
 - Enhancement (Verstärkung)
 - Negation
 - Reinterpretation
 - Expectation



PALPATION



PALPATION



HOMUNCULUS

Körperteile mit besonders vielen sensorischen und motorischen Verbindungen zum Gehirn sind vergrößert dargestellt.

PROCESS-SHEET

- 1) Concentration/attention on Matter
- 2) Concentration on Mode
- 3) What do you feel, where do you feel it ?
(Examiner)
- 4) What do you feel, where do you feel it ?
(Patient)
- 5) Consent, dissent, correlation



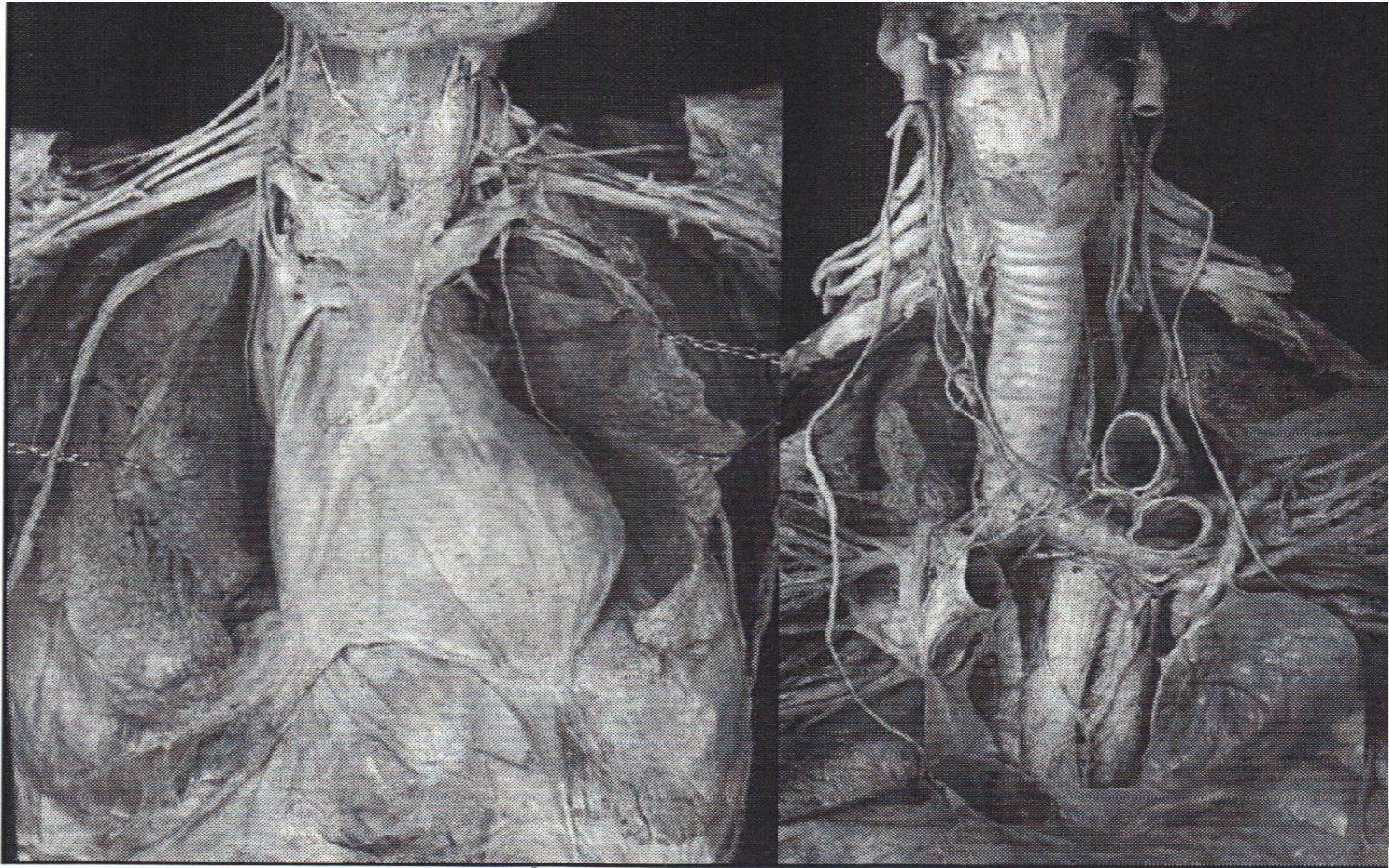
ANATOMY

“We teach you anatomy in all its branches, that you may be able to have and keep a living picture before your mind all the time, so you can see [...] all organs, how they are fed, what they must do, and why they are expected to do a part, and what would. Follow in case that part was not done well and on time. I feel free to say to my students, **keep your minds full of pictures of the normal body all the time, while treating the afflicted.**”

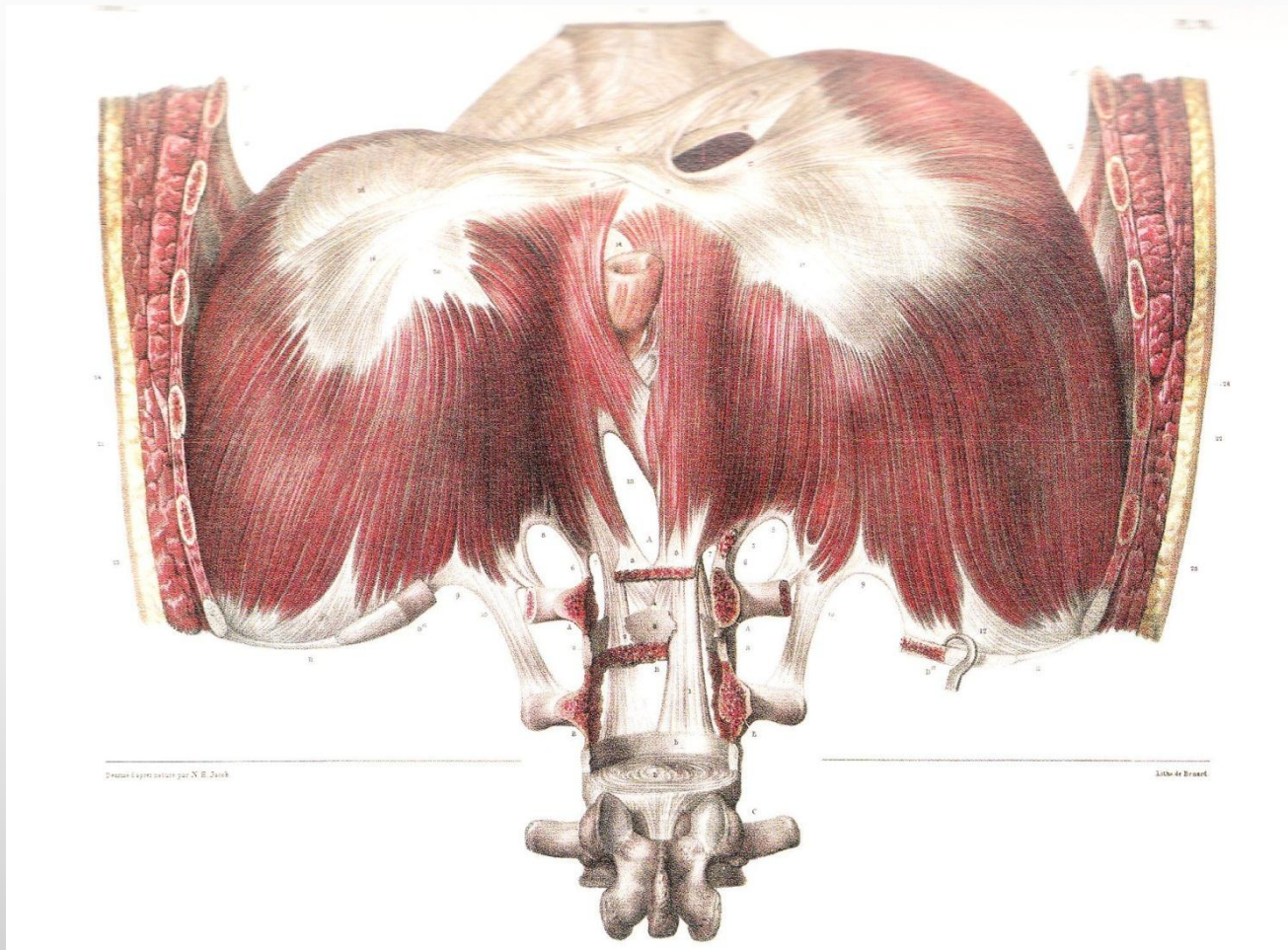
ANATOMY



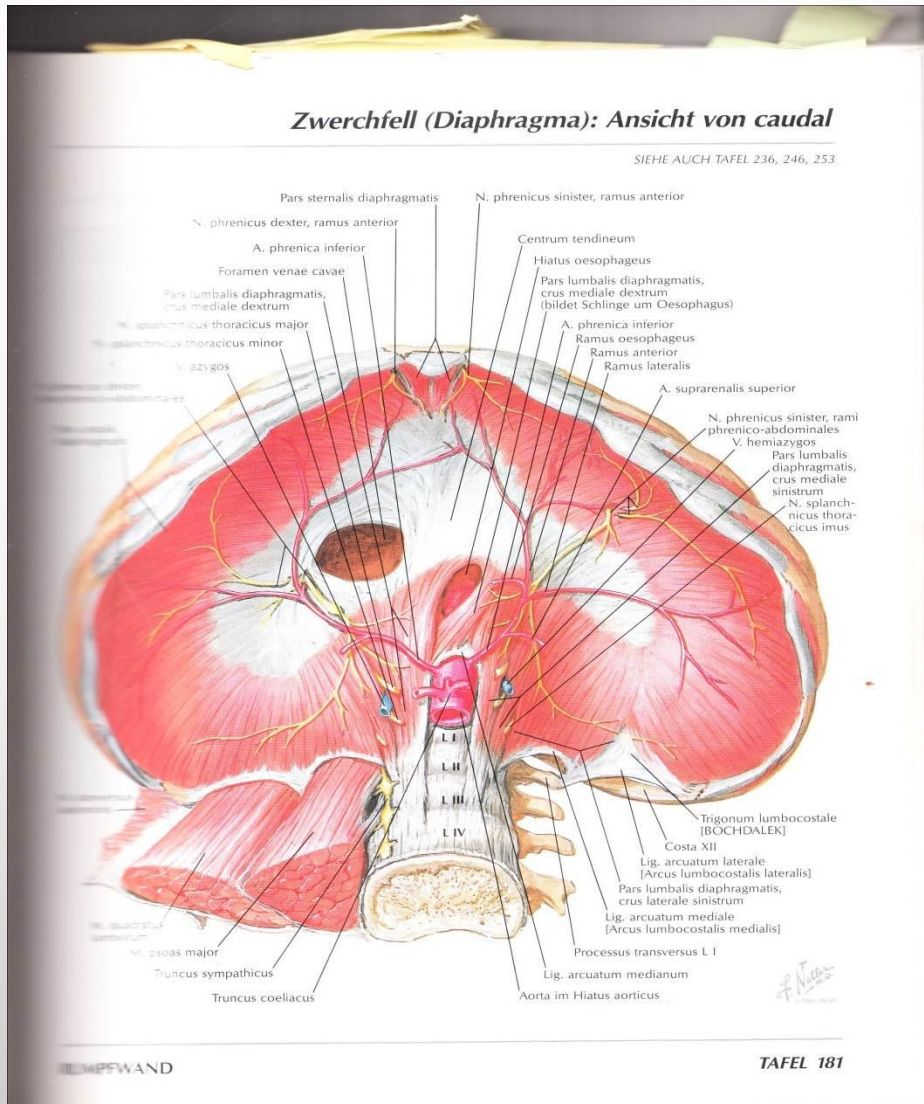
ANATOMY



ANATOMY



ANATOMY



PROCESS-SHEET

- 1) Concentration/attention on Matter
- 2) Concentration on Mode
- 3) What do you feel, where do you feel it ?
(Examiner)
- 4) What do you feel, where do you feel it ?
(Patient)
- 5) Consent, dissent, correlation



COMMUNICATION

Aristotle: two forms of action:

- *poiesis* = the aim is outside: production: I -> it
- *praxis* = the aim lies within: relation: I -> you

How do osteopaths come in relation ?



COMMUNICATION

...“Our nervous systems reflect these images [normal anatomy] and the patient receives them through our hands and our minds. The morphogenetic field is there as a reference, the water is the mediator, and the piezoelectric connective tissue is ready to receive.”

FASCIA:

Influenced by:

- Temperature
- Chemicals, medication
- Psychotrauma
- Shocks, punch
- Thoughts
- Pressure
- Elektrical, ionic, magnetic energy
- Photones
- Information like in homeopathy
- Morphogenetic field
- Astrological influence
- Communication



Abb. 4: Gewebekontinuität der Haut und der Muskelstrukturen



Abb. 5: Normale mikrovakuoläre Architektur

COMMUNICATION

Aristotle: two forms of action:

- *poiesis* = the aim is outside: production: I -> it
- *praxis* = the aim lies within: relation: I -> you

How do osteopaths come in relation ?



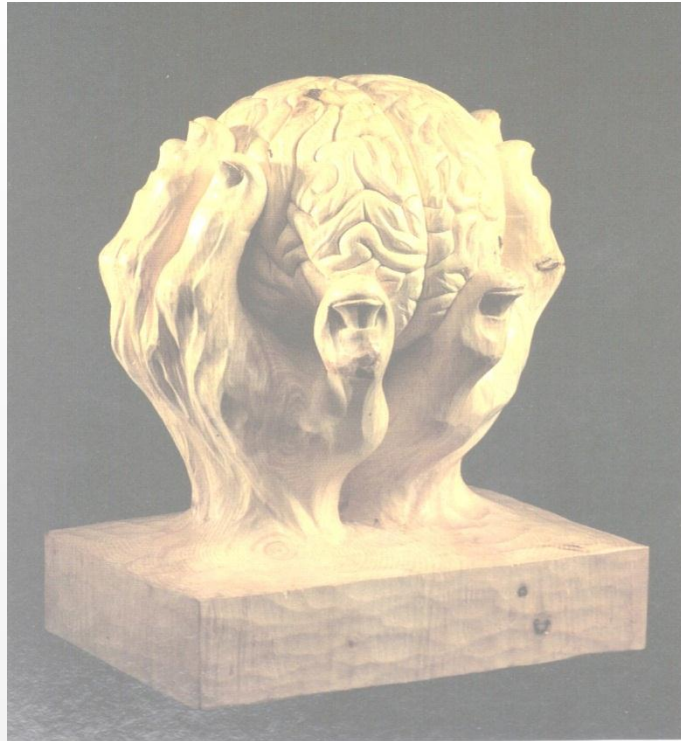
FASCIA OMNIPRESENT.

“This life is surely too short to solve the uses of the fascia in animal forms. It penetrates even its own finest fibers to supply and assist its gliding elasticity. Just a thought of the completeness and universality in all parts, even though you turn the visions of your mind to follow the infinitely fine nerves.” (A.T.Still)

PROCESS-SHEET

- 1) Concentration/attention on Matter
- 2) Concentration on Mode
- 3) What do you feel, where do you feel it ?
(Examiner)
- 4) What do you feel, where do you feel it ?
(Patient)
- 5) Consent, dissent, correlation





Discussion



Thank You!

www.osteopathie-jetzt.de

